



58VE

VENUE HIRE

EVENTS AT 58VE

Welcome to 58VE, one of the City of London's most adaptable riverside venues. Located on Victoria Embankment, just minutes from Blackfriars, we offer purpose-built event spaces across three distinctive floors. From the high-capacity flexibility of our ground floor suite, to the charm of the sixth floor lounge and terrace, and the breathtaking skyline backdrop of The View on the seventh floor, 58VE combines contemporary design with seamless technology, creating the ideal setting for any occasion.

Our newest space, The View, combines skyline scenery with smart, flexible design. With its own kitchen, integrated AV and spaces for branding, it's ideal for hybrid conferences, brand launches, receptions and dinners that need both impact and ease. Two balconies and sweeping river views provide an unforgettable backdrop for your guests – from first arrival to last toast.

58VE



The venue is also home to an exclusive sixth-floor lounge and rooftop balcony, set against the backdrop of London's iconic skyline. This stunning setting serves as an inspiring backdrop for any gathering. Our ground floor space can transform into two separate rooms, providing versatile options for both daytime and evening events.



INTRODUCING THE VIEW

Perched on the seventh floor, The View is 58VE's newest events space is a contemporary, light-filled room with floor-to-ceiling glass and panoramic views across the Thames. Just a few minutes from Blackfriars, it offers a distinctive central London setting for conferences, dinners and receptions.

A beautifully designed, flexible space, The View features dynamic, programmable lighting to match your brand colours and dedicated areas for graphics, signage and digital content, allowing you to bring your event identity to life.



Seventh Floor

The View

Seventh Floor Facilities

- Two private balconies overlooking the River Thames
- PA system including: 2 x handheld microphones & 5 x lapel microphones
- 2 x 98" LED Screens
- Trackable ceiling cameras
- High-speed Wi-Fi access
- Live streaming
- Dynamic, programmable lighting to match your brand colours or event theme
- Cloakroom
- Moveable staging and lectern
- In-house furniture
- Blank canvas branding areas to showcase logos, content and campaign visuals
- Bespoke menu planning
- Fixed bar



LOUNGE & BALCONY

Sixth Floor Facilities

- Built-in bar
- Impressive views of the Thames
- Speaker system for background music
- Cloakroom
- Wi-Fi access
- Bespoke menu planning



Sixth Floor Balcony

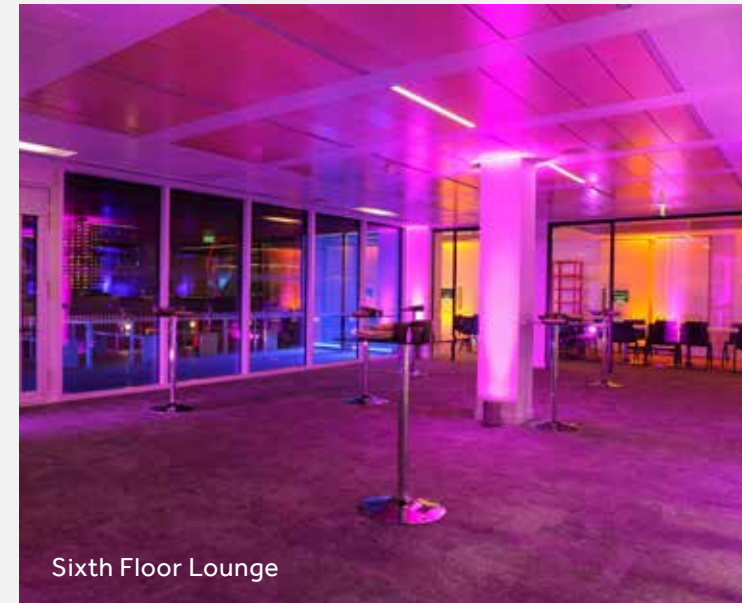


Sixth Floor Balcony

EXCEPTIONAL FACILITIES



Ground Floor - cabaret style



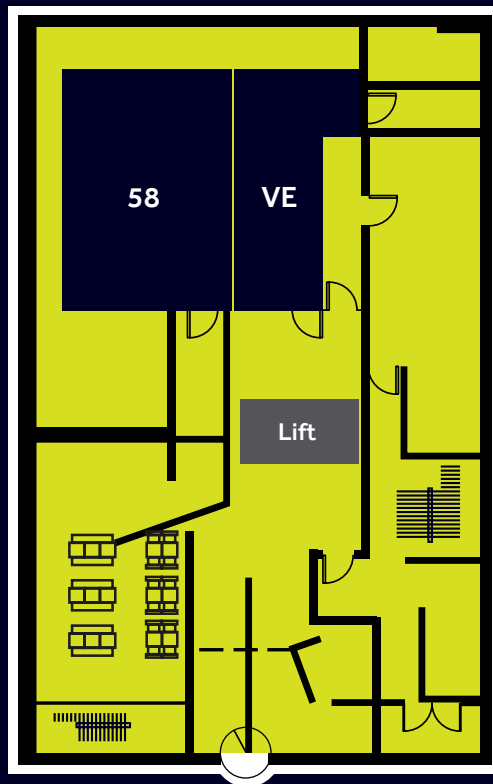
Sixth Floor Lounge

Ground Floor Facilities

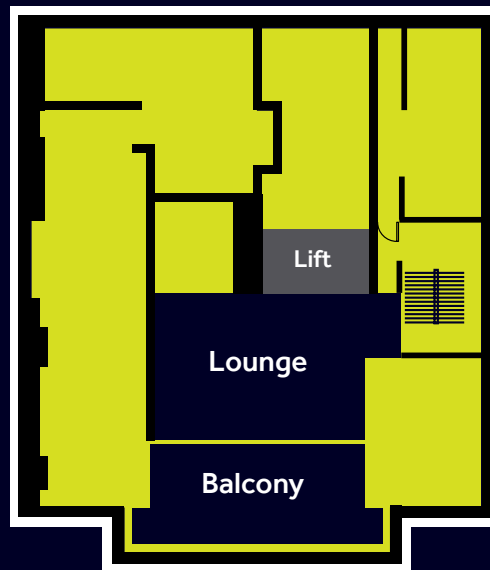
- PA system including: 2x handheld microphones & 5x lapel microphones
- 2 x 98" LED Screens
- Wheelchair accessible
- Cloakroom
- Dedicated event space foyer
- Moveable staging and lectern
- Flexible moveable wall partitions
- Writable magnetic walls
- Trackable ceiling cameras
- Wi-Fi access
- Live streaming
- Hearing loop
- Bespoke menu planning

FITTING YOUR EVENT

Ground Floor



Sixth Floor



Seventh Floor



FITTING YOUR EVENT

Layout	Ground Floor Events Space			Sixth Floor	Seventh Floor
	58VE	58	VE	Lounge & Balcony	The View
Boardroom	60	30	18	-	-
Theatre	180	90	50	70	150
Cabaret	90	55	30	-	90
Banqueting	102	66	36	50	120
Reception	200	120	65	100	200

58VE



FOOD & DRINK

Fresh, seasonal and local food

58VE events are brought to you by our in-house culinary team, a dynamic and visionary caterer with a conscience. Our dedicated team of skilled chefs have a natural passion to create dishes that are innovative, colourful and flavoursome. Whatever the occasion, our team can provide bespoke menus that cater to all your needs.



& MORE

Sustainability

Sustainability is central to our events, and we're committed to minimising their environmental impact through sustainable practices. We exclusively collaborate with suppliers who are aligned with our sustainability commitment.

Special rates

We offer special rates to charities and not-for-profit organisations. When you book an event with 58VE you are supporting the charitable work of Nesta. You can find out more about Nesta's work here: www.nesta.org.uk/about-us



Seventh Floor



IDEAL LOCATION

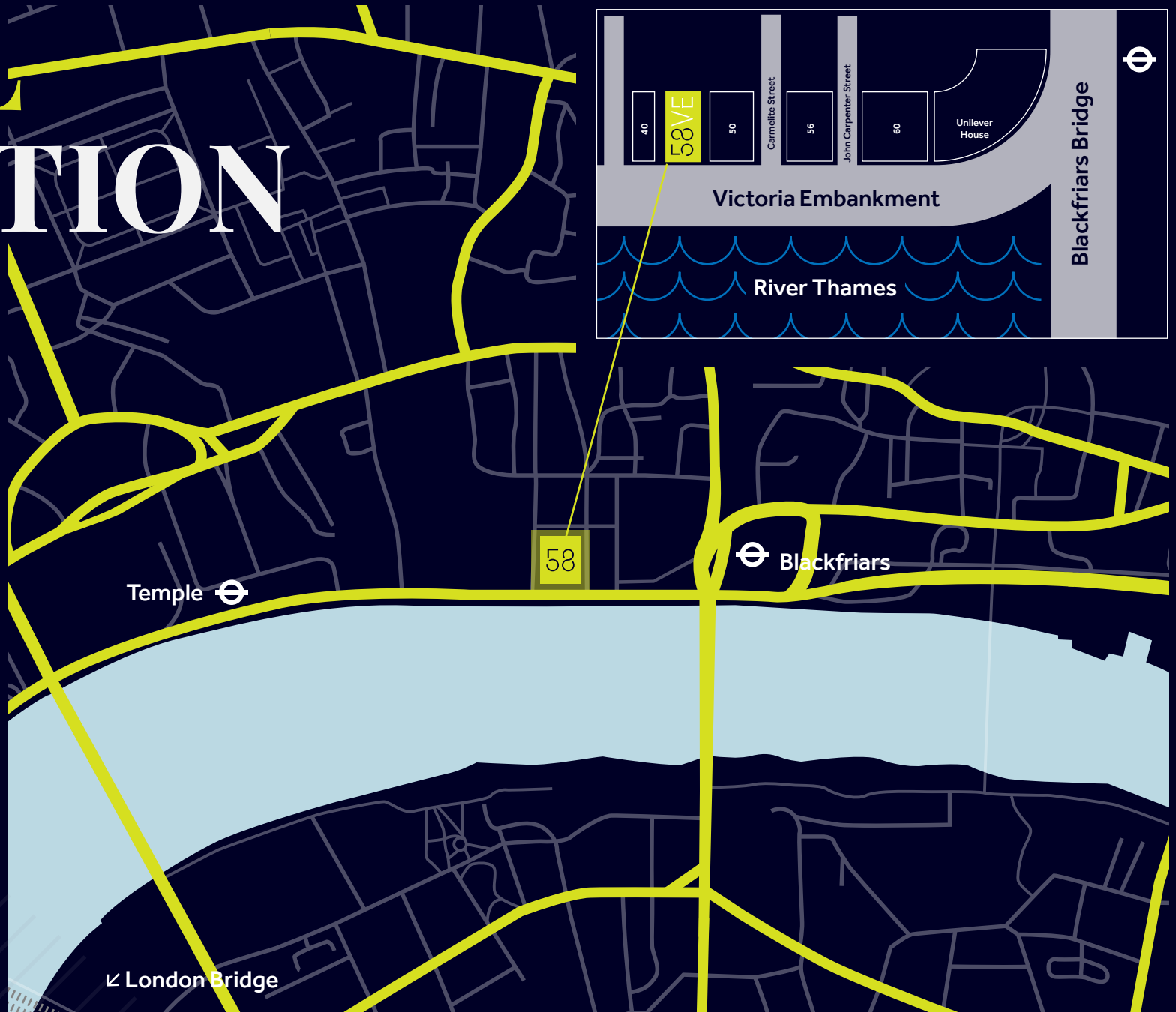
Located centrally on the banks of the River Thames, 58VE is easy to find from a variety of transport links across London.



Nearest stations

Blackfriars

Temple



58VE

58VE

Contact

venuehire@58ve.com

07866 948 562

www.58ve.com

58 Victoria Embankment

Temple

London EC4Y 0DS